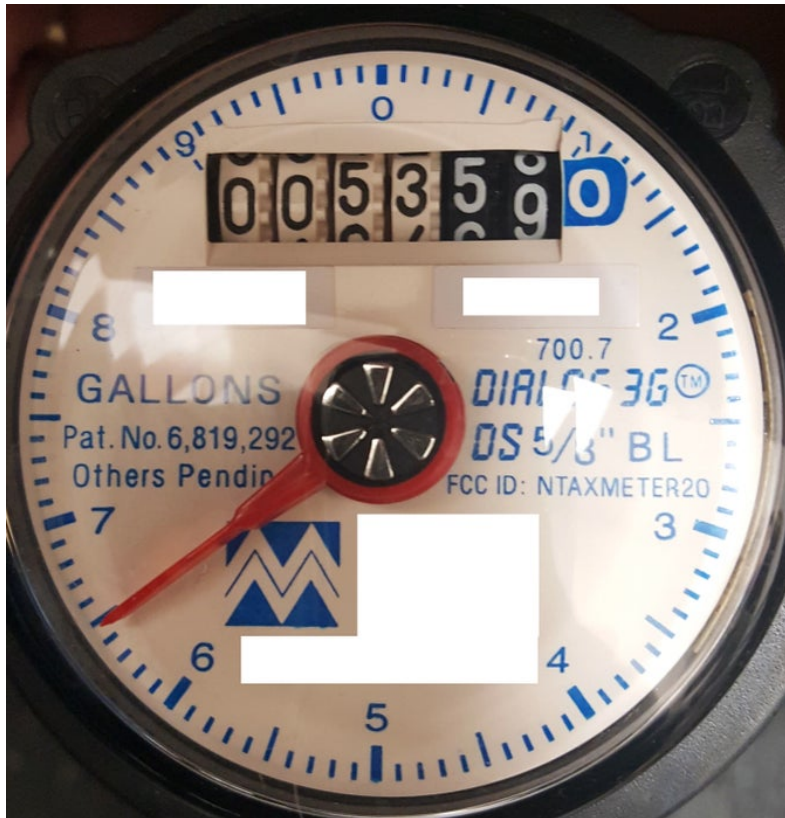


# How to read a water meter



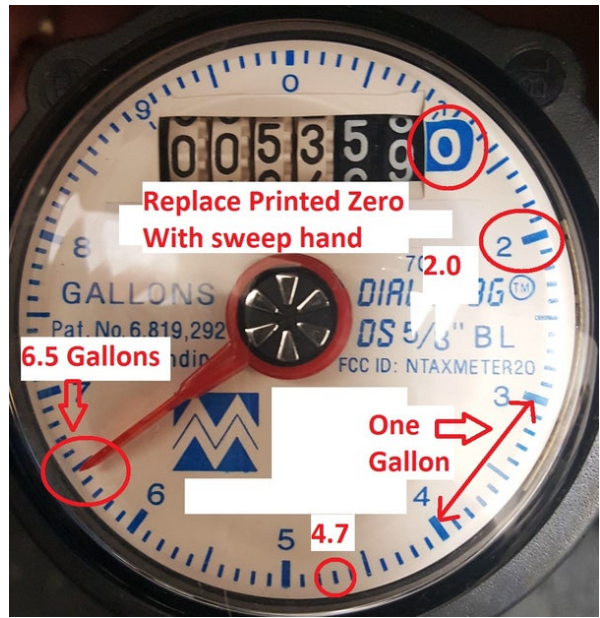
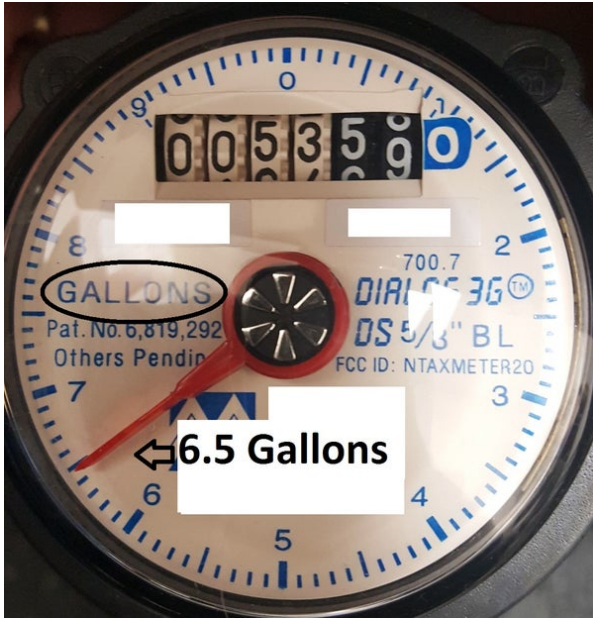
## Table of Contents

How to read a water meter .....	1
Intro: How to read a water meter.....	1
Step 1: The Printed Number .....	2
Step 2: Moving number wheels .....	3
Step 3: Black Digits .....	4
Step 4: The Final Reading .....	5
Step 5: Bonus - What is that other moving dial? .....	6

## Intro: How to read a water meter

The water meter shown above shows usage of 53,586.5 Gallons. Follow the steps and we'll show you how this is determined and how to read your own meter accurately.

## Step 1: The Printed Number



First, notice that the register increment is in GALLONS. You will notice on this register that one of the numerical readings of the odometer is not a moving wheel like the others, but is a printed zero. On larger meters, there could be two or more printed zeros represented by the sweep hand.

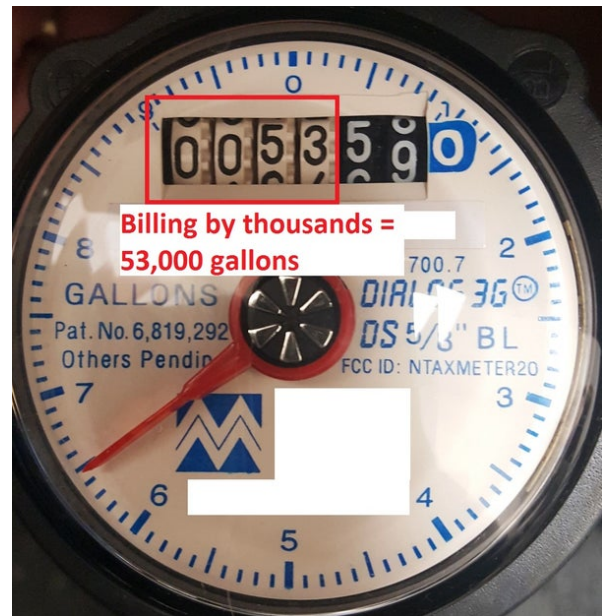
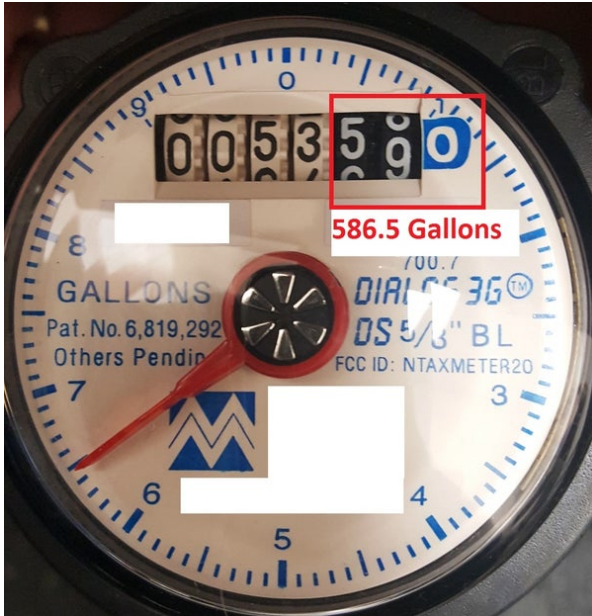
The printed zero is actually replaced by the location of the sweep hand for actual usage, troubleshooting, or testing. If on the 2 circled, it would be replaced by 2. Each full number is one gallon in this case, so if the sweep hand moves from 3 to 4 as shown with the arrow, that is one gallon of usage. The numbers between are 10ths of gallons, so the number circled between 4 and 5 represents 4.7 gallons. In THIS meter, the sweep hand is on 6.5, so the fixed zero is replaced by 6.5 gallons for actual use.

## Step 2: Moving number wheels



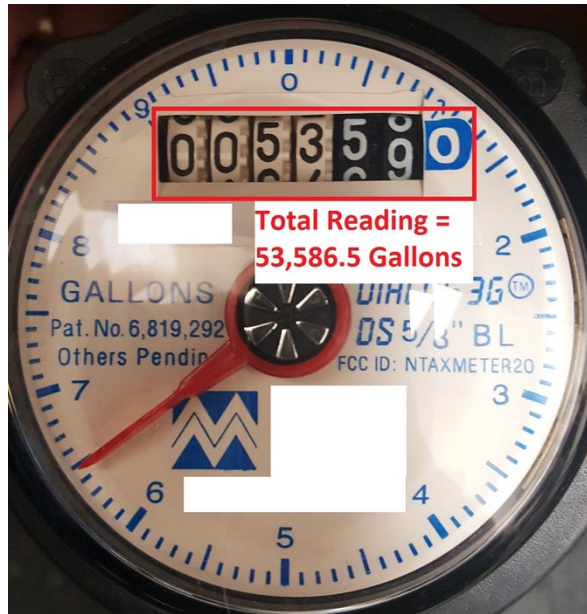
You will notice the first MOVING number wheel is moved between 8 and 9. It is not fully centered on 9 yet, and the sweep hand is on 6.5, so it is counted as 8. When the sweep hand reaches directly on "0" it will then count as 9. The odometer wheel will be centered and counted as whole. Reading the last TWO digits, one moving and one fixed is 86.5 gallons.

### Step 3: Black Digits



You may have noticed that the last three digit are dark, and those to the left of them are white or light colored. This is an industry standard for manual reading. The amount used under the 1000 is 586.5 gallons in this case. Meter reading almost never rounds up, but drops the last insignificant digit (.5).

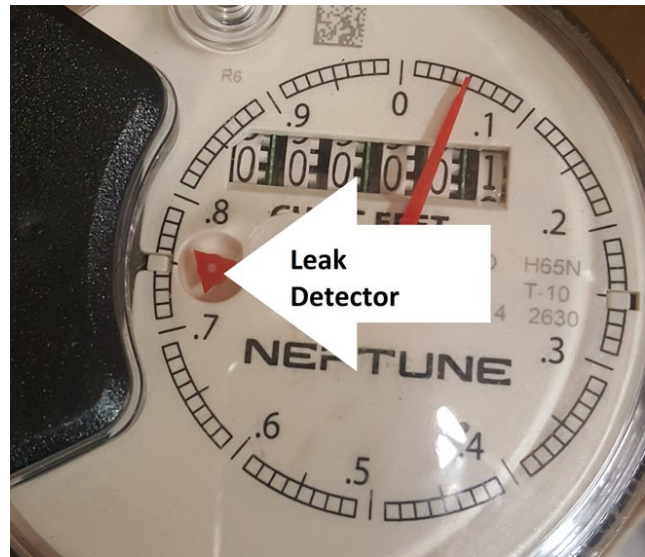
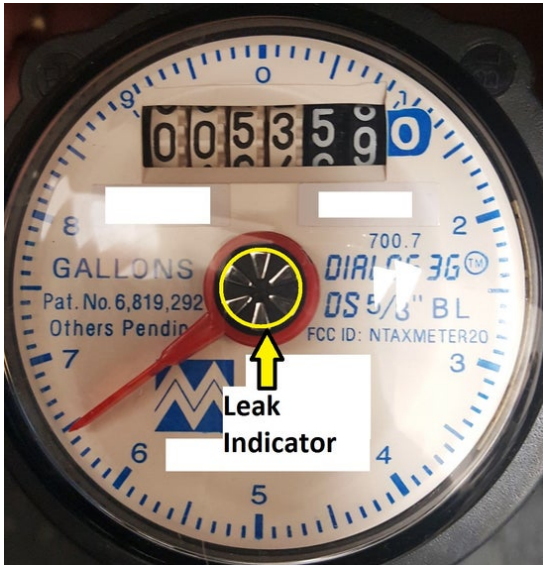
#### Step 4: The Final Reading



So now we have the explanation of how to read your water meter. The meter in this photo is showing ACTUAL usage of 53,586.5 gallons. It is read If your billing resolutions is:

Gallons = 53,586

**Step 5: Bonus - What is that other moving dial?**



Besides the moving odometer wheels and sweep hand you may find another small moving dial. This is the leak indicator. It will move when water is flowing too slow to see the sweep hand move and allow you to know if you have a small leak or small water flow. In some meters, there is no sweep hand and the dial serves as both a leak indicator and to measure low flows not indicated by the odometer wheels.